

# The Twickenham Tribune

## Contents

TwickerTape

20MPH Speed Limit

TwickerSeal

Twickenham Riverside

History Through Postcards

Udney Park Victory

Arts and Entertainment

Twickenham Film Festival

Following the Last

Neanderthals

River Crane Sanctuary

Steam, Steel and Shells

Twickers Foodie

Wine Review

PoppyTalk

Mark Aspen Reviews

Football Focus

A Traveller's Tales

Rugby updates

## Contributors

TwickerSeal

Alan Winter

Erica White

Vince Cable

Sammi Macqueen

Helen Baker

St Mary's University

Alison Jee

Michael Gatehouse

Sheena Harold

Mark Aspen

Doug Goodman

Rugby Football Union

LBRuT

## EDITORS

Berkley Driscoll

Teresa Read

## Contact

[contact@TwickenhamTribune.com](mailto:contact@TwickenhamTribune.com)

[letters@TwickenhamTribune.com](mailto:letters@TwickenhamTribune.com)

[advertise@TwickenhamTribune.com](mailto:advertise@TwickenhamTribune.com)



Published by:  
Twickenham Alive Limited (in association with  
World InfoZone Limited)  
Registered in England & Wales  
Reg No 10549345

The Twickenham Tribune is registered with  
the ICO under the Data Protection Act, Reg No  
ZA224725

# TwickerTape - News in Brief

## St Margarets Station

A new step-free access gate will be installed at St Margarets station to make travelling easier for people with mobility issues. The scheme is being jointly funded by South Western Railway (SWR) and the London Borough of Richmond.

## Teddington Cricket Club: a new pavilion and car park in Bushy Park.

Teddington CC and Radnor House have signed a 20-year agreement to share the playing fields and new pavilion. The current plan is for Radnor House to start to use the sports fields and new pavilion from September.

<http://www.teddingtoncc.co.uk/new-pavilion>

## Local Label For Twickenham

A Twickenham record shop is embarking on a new venture, by launching a new label. Eel Pie Records have launched Eel Pie Records: The Label. The first release, Buffalo Blood, comes out tomorrow (February 15).

Buffalo Blood, the album, was born in the heart of the New Mexico desert, recorded on location at La Plaza Blanca, Echo Canyon, and around Georgia O’Keeffe’s Ghost Ranch in Abiquiu; where Breaking Bad was filmed.

The songs and music of Buffalo Blood are the musicians’ response to the area where it was recorded: of living and working in the place.

## Cabbage Patch 10 Back On

The Cabbage Patch 10 will be continuing in 2019 and the race organisation is being taken over by The Stragglers!

[www.stragglers.org](http://www.stragglers.org)

## skyelectrical

Replacing your halogen recessed lights with LEDs will:

- ✓ SAVE ENERGY
- ✓ SAVE YOU MONEY
- ✓ PROVIDE BETTER LIGHTING

So...

- ✓ CALL US TODAY FOR A FREE HOME ASSESSMENT AND QUOTE

For a timed appointment please call Sky Electrical on 020 8894 1799

22 Fifth Cross Road, Twickenham, Middlesex, TW2 5LF

[www.skyelectrical.co.uk](http://www.skyelectrical.co.uk)



020 8894 1799  
info@skyelectrical.co.uk

# Amended 20mph limit set to go to Scrutiny and Cabinet for approval

An amended 20mph limit is set to be introduced in Richmond upon Thames, if the Council's Scrutiny Committee, followed by the Cabinet, agree to the amended proposals. This follows a 12-week consultation held last year.

While opinion was split among the nearly 10,000 respondents on whether to implement the council's 20mph proposal in its original form (47.9 per cent in favour and 49.7 per cent against), 52 per cent of respondents agreed that a 20mph limit should reduce the number and severity of road accidents.



The consultation also found that vulnerable road users were overwhelmingly supportive of the proposals with 65 per cent of under 19s and 60 per cent of over 75s supporting the proposals.

Commenting on the findings, Cllr Alexander Ehmann, Cabinet Member for Transport, Streetscene and Air Quality said:

“A majority of residents acknowledged that a borough-wide 20mph limit would improve road safety, but a small number of these residents felt unable to lend our original proposal their unreserved support.

“That is why we’ve spent time studying the consultation responses and have made meaningful changes to our proposals. Whether on enforcement, phased roll-out, evaluation, air quality or the exclusion of a number of roads, our amended proposal look to build further support around the areas raised via the Community Conversations and formal consultation process.

“We have sought to build consensus by accommodating the most significant perceived drawbacks with our original proposal. However, residents have told us that they do see the road safety benefit of moving to 20mph on all our roads.

“Our revised proposals were very much shaped by the views of our critics, but we also had to consider the impact on the youngest and eldest in our society who were roughly 2-1 in favour of a borough-wide 20mph limit.

“The council’s new proposal establishes a better balance that reflects the representations we received through a vibrant consultation process.”

Will Norman, London's Walking and Cycling Commissioner, who is working to deliver the Mayor of London's pledge to make walking and cycling safer and easier in the Capital, supported the announcement. He added:

"It is great to see Richmond Council looking to implement a 20mph scheme.

"The roll-out of 20mph speed limits in the borough will reduce the danger for cyclists and pedestrians. That's an important part of putting people and not vehicles at the heart of our transport plans.

"Making our streets more appealing for people walking and cycling brings health benefits to all Londoners, reduces congestion and helps tackle the toxic air crisis."

Taking the views of residents into account, the Council's amended proposal includes new changes, including:

- A revision of the proposed 20mph speed limit on the A308 between Kingston and Hampton, including Hampton Court Road, Upper Sunbury Road and Lower Sunbury Road (excluding Thames Street). The stretch (excluding Thames Street) will now be 30mph.
- Initial exclusion of the A310 between Kingston Bridge roundabout and Twickenham. This will be subject to a study aimed at introducing collision and speed reduction measures and will also determine whether to implement 20mph on the A310.
- Initial exclusion of part of the A305 between Apex Corner roundabout and Twickenham town centre.

This will also be subject to a study aimed at introducing collision and speed reduction measure and will determine whether to implement 20mph on this section of the A305.

The Council will also commission an independent air quality assessment around the scheme measuring key baseline readings around the likes of NO2 and PM10 emissions.

We are committed to reviewing the scheme after implementation and will look at additional enforcement measures as required and deemed appropriate. This could include further roll out of the successful Community Roadwatch programme as well as potential speed indicator devices.

If the decision is approved by the Cabinet a speed limit order will be advertised and any representations considered. Read the full Cabinet Report, [here](#).

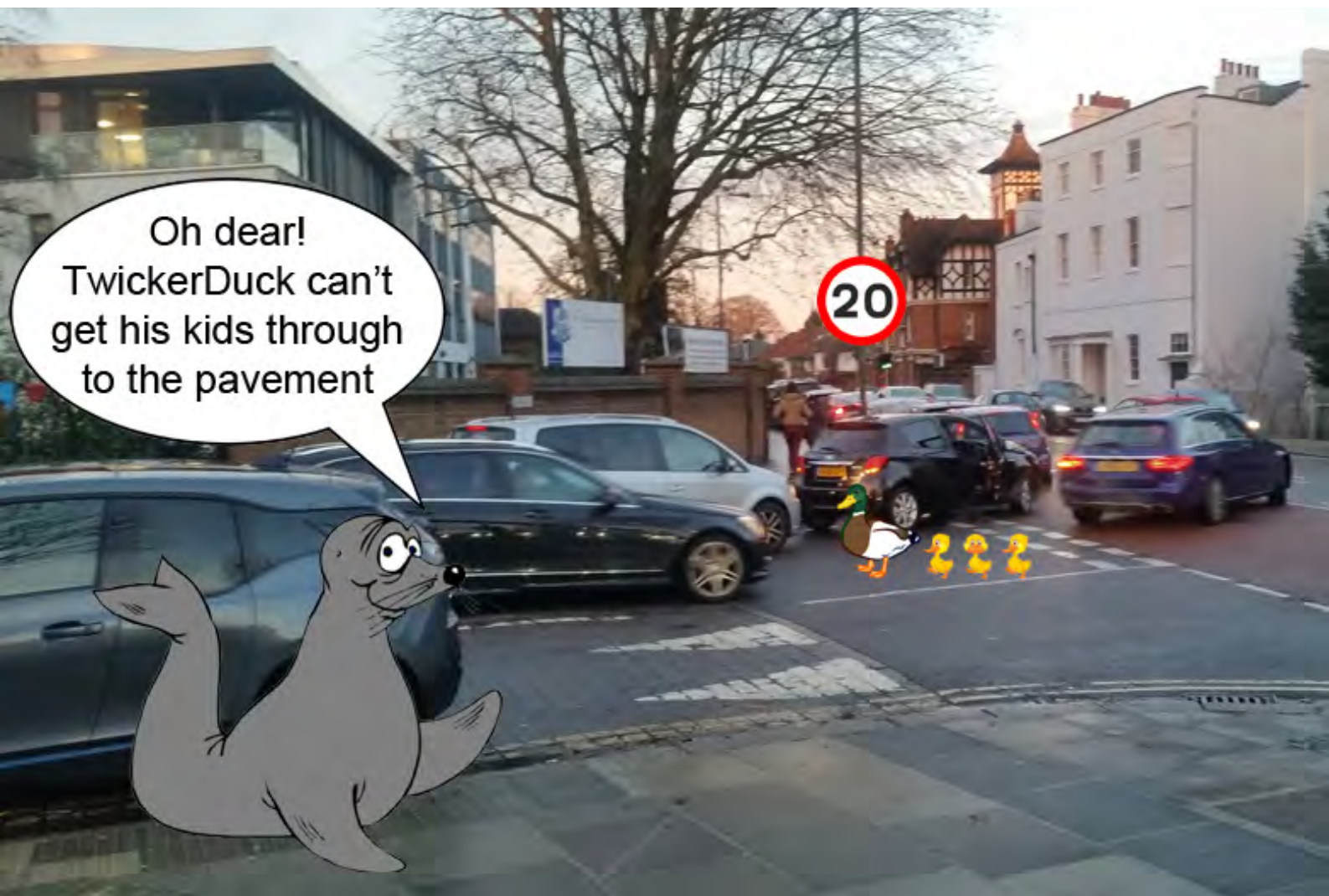




This week the council announced that an amended 20mph limit proposal will go to Scrutiny and Cabinet for approval. This follows a 12-week consultation on the council's intention to introduce a blanket 20 mph speed limit across the borough.

There were nearly 10,000 respondents to the consultation, with 49.7% against the proposal and 47.9% for the proposal. TwickerSeal thought this meant that the decision was therefore not in favour of the proposal. Admittedly TwickerSeal is not very good at mathematics; flippers are not ideal tools. It seems that the proposal will go ahead anyway, with some nuanced changes detailed in the full report (q.v.).

TwickerSeal does, however, think that there are several more immediate issues that could be looked at to help improve safety and a better enjoyment of the roads for all. Cycling infrastructure is very poor, often with inadequate or even dangerous cycle lanes. Traffic outside schools is often hazardous, not because of motorists doing 30mph, but because of the complete disregard of many parents for anyone else.



# PART 114 - TWO FALLS, TWO SUBMISSIONS OR A KNOCKOUT AT THE VALIANT KNIGHT.

Last week's feature on the Duke Of Clarence Pub in Hampton Hill managed at one time by Chelsea and England football winger Frank Blunstone, raised a few comments about other celebrity landlords in the Borough's pubs.

Further down Hampton Hill High Street, at No. 99, for a few years of the 1970s was the "Valiant Knight" which you can see on the right on this week's postcard. It had been named the Crown and Anchor since the 1890s and it was rebuilt in 1908 when the road was widened for double tram tracks. In the last 50 years or so it has been renamed The Valiant Knight, then Joe's Restaurant and it is now La Familia Restaurant.



Our celebrity publican this week is none other than legendary TV Wrestler Steve Veidor who took over and renamed the pub "The Valiant Knight" in the late 1970s. Born Steve Bell in 1938 he was better known by his ring name of Steve Veidor. He was often billed as "The Handsome Heart Throb" during that strange period of wrestling before massive Saturday afternoon TV audiences that had to finish by ten to five for the football results. There were only two television channels in those days! – honest!

Steve won the Royal Albert Hall Tournament Trophy on three occasions. On 15 September 1978 he won the European Union Heavyweight Championship at Liverpool.

Steve Veidor made many appearances on ITV's World of Sport, and has wrestled across Europe, worked in films, television game shows and commercials. He appeared alongside other wrestlers in the 1968 cult film *The Touchables*, directed by Robert Freeman, and as Muscles in Derek Ford's 1973 film *Keep It Up, Jack*.

Today the old Crown and Anchor public house is the site of popular Spanish Restaurant "La Familia" which opened back in 2009. Look out for the monthly live music and tribute acts if you like that sort of thing!

My search for old postcards continues. I am always looking for old postcards and old photograph albums etc. The postcards can be British or foreign, black and white or coloured and of places or subjects.

If you have any that are sitting unwanted in a drawer, in a box in the loft or in the garage or under a bed, do contact me on 07875 578398 or [alanwinter192@hotmail.com](mailto:alanwinter192@hotmail.com) I would like to see them and I pay cash!



Richmond  
Concert  
Society

The next concert is on

**Tuesday 26th February**

in St Margaret's Church  
St Margaret's, TW1 1RL  
at 7.45 pm.

**Clare Hammond (piano)**

**'Acclaimed as a pianist of "amazing power  
and panache"' (The Telegraph)**

**Will play Haydn, Mendelssohn, Schumann,  
Adés, Rimsky-Korsakov, and Rachmaninov.**

**Richmond Concert Society**

[www.richmondconcerts.co.uk](http://www.richmondconcerts.co.uk)

# A WIN IN THE HIGH COURT FOR FRIENDS OF UDNEY PARK

## Excellent news for all who love community sport and green space

The Planning Inspector shocked everyone when he removed Local Green Space(LGS) status for Udney Park at the very end of the Richmond Local Plan process. We appealed for a Judicial Review(JR) of this decision. Quantum strongly opposed FUPPF in the High Court arguing against LGS protection to enable their building plans.

On 8th Feb 2019 in the High Court, Judge Waksman upheld FUPPFs claim and ordered a new consultation on the LGS status of Udney Park.

Victory for the underdog!

Justice has prevailed -the community has won;  
Quantum lost and will pay our costs



### Background

The Teddington Society and Friends of Udney Park applied for “Local Green Space” status, important as it is equivalent to “Green Belt”, as part of the Richmond Local Plan, which sets the development strategy for 15 years. After a public consultation, the Council Cabinet adopted LGS for Udney Park in Dec 2016. The Local Plan was then subject to a Public Exam by a Planning Inspector, where the Council defended the LGS status and Quantum tried to remove it, arguing that Udney Park Playing Fields had “no recreational value”.

After the Public Exam the Inspector issued his Main Modifications, without referring to Udney Park; as a result, all parties assumed Udney’s LGS status would be maintained. However, in his Final Report, the very last stage of the Public Exam the Inspector unexpectedly removed LGS from Udney, an act that has now been repealed by the Judge.

### The Judgement

Our case rested on the fact that the Inspector’s Main Modifications hid his intention to remove LGS from Udney and so denied the community a fair chance to argue the LGS case, in contrast to Quantum who as challenger of the Plan could lobby against LGS.

Our barrister successfully argued that once the Inspector had secretly changed his mind about the LGS status of Udney Park, then the community themselves became a challenger to the Plan and had a right to be consulted, which it had been unfairly denied as the Inspector failed to mention his LGS decision in the Main Modifications, the final consultation window.

After the Judge ruled unequivocally that our primary grounds for raising the JR were legally



sound, crucially we had to prove we had suffered “substantial prejudice”, which means answering “could the outcome on the assessment of LGS have been different?” We had to prove we had ample independent evidence that the Inspector had denied himself the chance to assess. The Judge concluded that this additional evidence could have impacted on the outcome of the assessment of Udney as LGS, that our case was good, and issued a Consent Order.

What Happens Next with the Consent Order?

The Consent Order turns the clock back to October 2017, when the Council had approved Udney LGS. In the next 2 weeks, the Council will commence a new 6 week consultation on the Inspector’s decision that had removed Udney LGS status from the Local Plan.

We will then have 6 weeks to prepare our new Application for LGS, which will then be assessed by LBRUT and crucially determined by a new Planning Inspector by 15th May.

So, to be clear, we don’t yet have Udney LGS back, but we have a fresh chance to make the case on a fair and open basis. If LGS status is recovered it will help the Council fulfil its own commitments in the Local Plan and provide further weight to their Objection in the upcoming Public Inquiry on Quantum’s Planning Application, starting on June 24th.

Next steps

Councillors of all 3 parties were elected with manifesto commitments to keep Udney Park free from development. The adopted Local Plan also commits Council Officers to protect Udney. We will be asking for another meeting with the Leader of Richmond Council, Councillors and Officers to ensure all of Quantum’s opponents: UPPF Trust, the Teddington Society, the GLA, Sport England and the Council are aligned with “common ground” and with a consistent strategy to protect all of Udney Park at the Public Inquiry.

Ready to talk Plan B

Udney Park can be a successful community facility for all to enjoy without a developer’s carve up. Quantum justify their building plan by arguing that Udney Park is not viable without residential development; the thriving clubs locally prove this is complete nonsense. Teddington CC and Teddington Athletic FC have started building an amazing new £1.5 million pavilion in Bushy Park without any cash from a developer! FUPPF are working on Plan B, the only appropriate future for Udney Park, watch this space.

Playing Fields are now even more heavily protected in Policy, the new 2019 London Sport strategy focuses on physical activity and social cohesion, London must keep its playing pitches. Investing in building over playing fields is increasingly viewed as unethical and large property firms and investment funds steer clear of such schemes.

We are ready to offer Quantum a way out of their toxic “punt” on Teddington’s playing fields.

Thank you to all that donated so far to help us secure all of Udney Park for the community, this Judicial Review is a massive win in the war for the future of Udney Park.

“Udney Park Fields Forever!”

### Request for donations

Udney Park Playing Fields are a precious resource in a part of the borough which many families

Donate [HERE](#)





\* denotes new listing

Tuesday, 12-Saturday, 16 February, at Hampton Hill Theatre, TW12 1NZ Matinee, EVENINGS, 7.00, Saturday Matinee , 2.00. Kristi Dance Academy presents BEAUTY OF DANCE.

Info: <https://www.ticketsource.co.uk/kda>

Sunday, 17 February, 6.00 at HHT, VARIETY MUSIC HALL, an evening of well-known songs and raucous laughter,

Info: [varietymh@yahoo.co.uk](mailto:varietymh@yahoo.co.uk)

Thursday, 21-Sunday 24 February at 7.45 and Saturday & Sunday matinees, Richmond Shakespeare Youth Theatre present PUNK ROCK and BASSETT by Simon Stephens and James Graham at Mary Wallace Theatre, Embankment.

Info: <http://www.richmondshakespeare.org.uk>

Friday, 22-Saturday, 23 February at 7.30 and Saturday matinee at 2.30 Sat at HHT, the Star Pantomime Group presents ALADDIN AND HIS MAGIC LAMP.

Info: 07436 809 622

\* Sunday, 3-Saturday, 9 March, at 7.45 eves & Sunday, 4.00, at Hampton Hill STUDIO Theatre, LILIES OF THE FIELD, portraying the role of just 4 of the Landgirls in WW2.

Info: <http://teddingtontheatreclub.org.uk>

\*Saturday, 16 March at 7.30 at St Stephen's Church, TW1 2PD, RICHMOND ORCHESTRA perform Tchaikovsky, Smetana and Walton under the baton of Martin Smith, with Violin soloist, Sarah-Jane Bradley.

Info: <http://www.richmondorchestra.org.uk>

Saturday, 16 February, 8.00 at Hammond Theatre, Hampton School, MCD Concerts presents CREGAN & CO, featuring Ben Mills, who will be performing Rod Stewart songs live on stage.

<https://www.thehammondtheatre.co.uk/whats-on>

\*Sunday, 10 March, 2.30 at The Exchange, TW1 1BE Arts Richmond hosts YOUNG WRITERS' FESTIVAL, 2018-19 AWARDS CEREMONY

Info: [info@artsrichmond.org.uk](mailto:info@artsrichmond.org.uk)

Last weeks to visit STRAWBERRY HILL HOUSE where Horace Walpole's TREASURES are

temporarily on view in their rightful setting. But only until the end of February.

Info: <https://www.strawberryhillhouse.org.uk>

Tuesday, 26 February, 7.45 at St Margaret's Church, TW1 1RL, Richmond Concert Society monthly concert, CLARE HAMMOND, RPS Young Artist of the Year Award , 2016 gives a piano recital, including works by Mendelssohn, Haydn, and others.

Info: [www.richmondconcerts.co.uk](http://www.richmondconcerts.co.uk)

\*Saturday 2 March, 7.30 at Landmark Arts Centre, TW11 9NN, THAMES PHILHARMONIA give a concert os Schumann and Brahms

\*Saturday, 2-Sunday, 3 March at Langdon Down Centre, 2TW11 9PS, LONDON POTTERS' FAIR, showing and selling abstract pieces, tableware, decorative jewellery and one-off collectors' pieces.

Info: <https://langdondowncentre.org.uk>

Continuing exhibitions at the Stables, Orleans House Gallery; until 24 February: the BRITISH TAPESTRY GROUP: Sound and Weave/Rhythm of the Weave. In main gallery COLLECTION CURIOSITIES, unknown treasures from the Borough Art Collection.

<https://www.orleanshousegallery.org>

Tuesday, 12-Thursday, 28 February: KNOT.JUST.STITCH in the Landmark Arts Gallery, TW11 9NN.

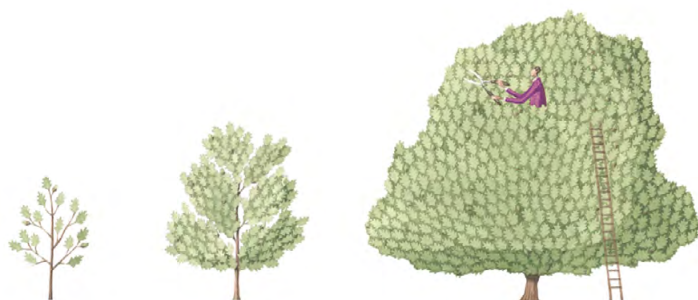
Info: <http://www.landmarkartscentre.org>

Saturday, 16 February at Normansfield Theatre, PINK PROMS 2019. The London Gay Symphonic Winds will perform, compered by comedian Cally Beaton.

Info: <https://langdondowncentre.org.uk>

Sunday, 17 February 2.30 at LAC. CLASSICS IN THE AFTERNOON resume with CHARLES MACDOUGALL & ROBERT MINGAY-SMITH, tenor duo of VOCES8 fame, present a tailored programme to delight all-comers.

Info: <http://www.landmarkartscentre.org>



**The Tree Agency**

darryl parkin

The Treehouse  
25 King Edwards Grove  
Teddington, Middlesex TW11 9LY  
Telephone 020 8274 0107  
Mobile 07960 123580  
Fax 020 8274 0119  
info@thetreeagency.co.uk  
www.thetreeagency.co.uk



*The Tree Agency*

Monday, 18 February at 2.00 Theatre of Widdershins presents SNOW WHITE, ROSE RED, BEAR BROWN, a show for all the family at LAC.

Info: <http://www.landmarkartscentre.org>

Jazz and Rock enthusiasts who regularly attend various bars at The Cabbage Patch Pub in London Road are advised to visit the websites below to check what's on.

Sunday, 17 February, TWICKFOLK holds a SHOWCASE, featuring finest floor-spot singers on stage.

Info: <http://www.twickfolk.co.uk>

Tuesday, 19 February at the Patchworks Bar, TW1 3SZ TWICKENHAM JAZZ CLUB hosts DAVE HAMMER'S Little Big Horn.

Info: <http://www.twickenhamjazzclub.co.uk>

Thursday, 21 February at 8.30 EEL PIE CLUB hosts a rare appearance of Rock band LEAF HOUND with PETER FRENCH, vocals, PETER HERBERT, bass and & DOMINIC FRENCH, drums.

Info: <http://www.eelpieclub.com>

Alternate Thursdays at 8.00pm at The Turk's Head, Winchester Road, St Margaret's, the Pub Choir invites you to join in and relax. Sing your heart out with a glass of your favourite tipple in your hand!

Saturday, 16 February at 9.00pm. The MIDNIGHT RIVER BLUES BAND returns to the popular venue, The Prince Blucher, on Twickenham Green, TW2 5AG. Good grub beforehand to prepare for lively evening.



Twickenham Green  
TW2 5AH

**Shanawaz  
express**

CONTEMPORARY INDIAN TAKEAWAY

**Health Conscious?**  
Why not have your dishes cooked with olive oil for an extra 60p

**020 88934881**  
[www.shanawazexpress.co.uk](http://www.shanawazexpress.co.uk)

**ALLERGY ADVICE**  
Please note that some of our dishes contain dairy, nuts, eggs and other allergens. If you suffer from any food allergies, please make sure to inform us before placing your order.

# TWICKENHAM MP SUPPORTS CAMPAIGN TO HELP YOUNG PEOPLE BUILD GOOD MENTAL HEALTH

At Westminster, Sir Vince Cable joined young people and mental health experts from leading charity, Action for Children, to support the parliamentary launch of Build Sound Minds – a campaign to help children and teenagers build good mental and emotional wellbeing.

A third of 15 to 18-year-olds assessed by Action for Children were found to be suffering from mental health issues. Pupils in need of support have been taking part in the Blues Programme, the first ever UK-wide early help intervention for teenage depression.

As part of Children’s Mental Health Week (4-10 February), the Twickenham MP pledged support for the charity’s campaign, which aims to improve children and teenagers’ mental health by providing families with accessible information, tools and tips.

Sir Vince Cable MP said:

“The most recent official figures show one in nine children between 5-15 experiencing a mental health disorder. This simply can’t go on.



“Acting early can help stop problems in their tracks and it’s vital we do everything we can, not only to help these young people, but to prevent these problems coming about in the first place.

“That’s why I’m pleased to be supporting Action for Children’s work through Build Sound Minds, and I encourage young people of all ages across Twickenham to look out for their own wellbeing and to seek support early if they’re struggling.”

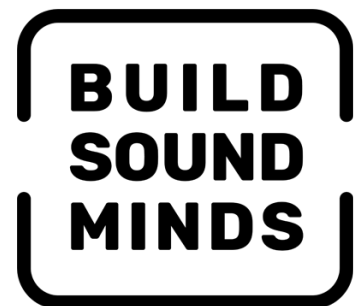
Julie Bentley, chief executive of Action for Children, said:

“Just like our physical health, our emotional wellbeing needs care and attention. And the first step in doing this is to create a positive conversation about mental health.

“Every day we support children and teenagers who are struggling for a number of reasons. Some are concerned about their futures, many are dealing with the intense pressure of school work and others are experiencing problems at home, all while navigating a complex 24/7 world with constant stimulation from social media.

“It’s no wonder that things can sometimes become too much for young people to handle. But with the backing of MPs like Sir Vince, Action for Children can support young people to deal with their feelings from an earlier age, help prevent problems from starting and allow them to bounce back quickly if they do.”

For more information, visit [www.buildsoundminds.org.uk](http://www.buildsoundminds.org.uk)



# Statement From Twickenham Riverside Trust

Twickenham Riverside Trust whole heartedly supports the process that has been initiated by the current administration to improve Twickenham Riverside.

We are committed to ensuring the Trust's objects to preserve protect and improve for the benefit of the public, the Riverside and its environs.

We look forward to working further with the council and other stakeholders to realise the full potential of Twickenham Riverside.

Anne Perry  
Twickenham Riverside Trust



<http://twickenhamriversidetrust.org.uk>

## Princess Alice Hospice Community Choir and the Strawberry Hill Singers

One of London's leading concert venues is hosting a one-off choir concert showcasing the talents of the Princess Alice Hospice Community Choir and the Strawberry Hill Singers on 31 March.

Cadogan Hall in the heart of Chelsea will resound to the sound of show tunes from Broadway classics by Rodgers & Hammerstein including a choral selection from My Fair Lady, to Schonberg and Kretzmer's Les Miserables, in a special fundraising evening for the Esher-based Hospice.

The Strawberry Hill Singers is a 65 strong community choir that meets in the magnificent Gallery at Horace Walpole's 18th Century Gothic Revival mansion.



Princess Alice  
Hospice

# 100 voices

for Princess Alice Hospice



Join us on a show tune journey

West End stars and a full stage band

Tickets at  
Cadogan Hall  
box office  
0207 7304500  
from £15

**Sunday 31 March 2019, 6.30pm at  
Cadogan Hall** 5 Sloane Terrace, London SW1X 9DQ  
For more information visit [pah.org.uk/100 voices](http://pah.org.uk/100voices)

The Princess Alice Hospice community choir have come together with the Strawberry Hill House choir to form '100 voices for Princess Alice Hospice.'

[pah.org.uk](http://pah.org.uk)      Join us @PAHospice

© 2019 Princess Alice Hospice. Registered charity no. 1010930 and a company limited by guarantee in England and Wales no. 1599796

# CALL FOR ENTRIES FOR THE TWICKENHAM FILM FESTIVAL 2019

# TWICKENHAM ALIVE FILM FESTIVAL

[www.twickenhamfilmfestival.com](http://www.twickenhamfilmfestival.com)

The Twickenham Alive Film Festival is a community-based film festival inviting submissions of short films, up to 10 minutes, based on four categories:

- Films from within the London Borough of Richmond upon Thames
- Films from the United Kingdom
- Films from outside the United Kingdom
- Films by film students

The suggested theme for submissions is 'Where You Live' and the films can be on any aspect of the area, way of life, attractions, culture, sport or environment of the entrants' home area.

Please contact us if you need further clarification.

Films can be of any genre, such as documentary, drama or animation.

*Click image below to view a previous entry*

## ***Gorham Caves***

**Filmmaker: Gibraltar Museum**

**Festival Award 2016**

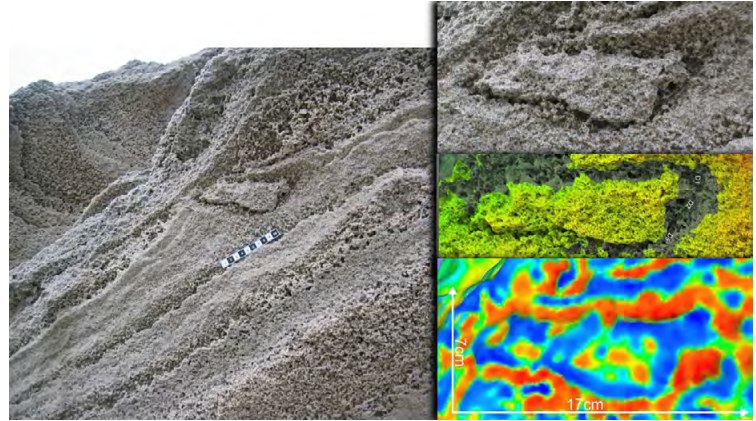




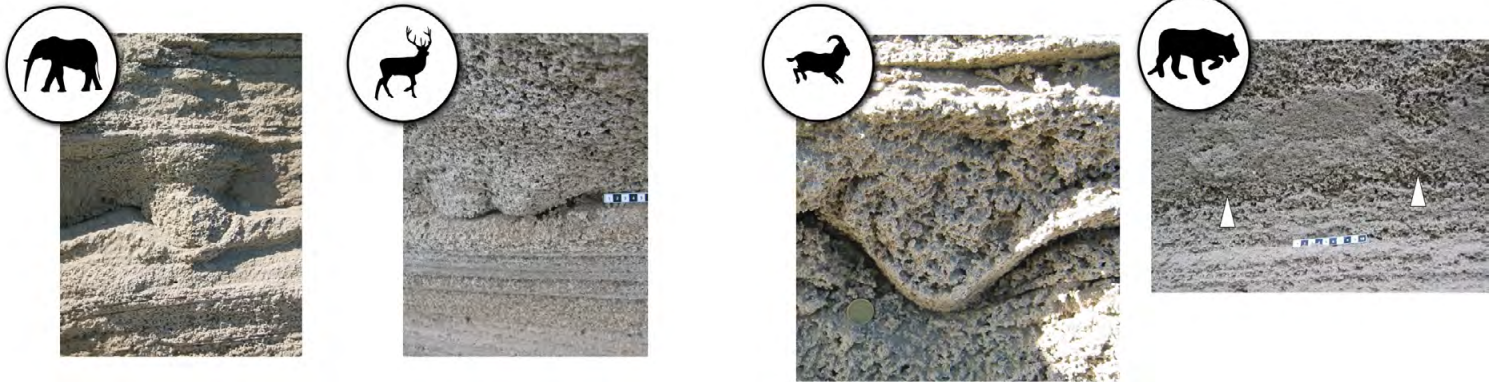
# Following the last Neanderthals: Mammal tracks in Late Pleistocene coastal dunes of Gibraltar (S Iberian Peninsula).

The prestigious international journal *Quaternary Science Reviews* has just published a paper which has involved the participation of Gibraltarian scientists from the Gibraltar National Museum alongside colleagues from Spain, Portugal and Japan. The results which have been published come from an area of the Catalan Bay Sand Dune.

This work started ten years ago, when the first dates using the OSL method were obtained. It is then that the first traces of footprints left by vertebrates were found. In subsequent years the successive natural collapse of sand has revealed further material and has permitted a detailed study including new dates.



The sand sheets in the rampant dunes above Catalan Bay are a relic of the last glaciation, when sea level was up to 120 metres below present levels and a great field of dunes extended eastwards from the base of the Rock. The identified footprints correspond to species which are known, from fossil material, to have inhabited Gibraltar. The identified footprints correspond to Red Deer, Ibex, Aurochs, Leopard and Straight-tusked Elephant. In addition the scientists have found the footprint of a young human (106-126 cm in height), possibly Neanderthal, which dates to around 29 thousand years ago. It would coincide with late Neanderthal dates from Gorham's Cave.



If confirmed to be Neanderthal, these dunes would become only the second site in the world with footprints attributed to these humans, the other being Vartop Cave in Romania. These findings add further international importance to the Gibraltar Pleistocene heritage, declared of World Heritage Value in 2016.

The research was supported by Her Majesty's Government of Gibraltar under the Gibraltar Caves Project and the annual excavations in the Gibraltar Caves, with additional support to the external scientists from the Spanish EU project MICINN-FEDER: CGL2010-15810/BTE

An Interview with Dr Geraldine Finlayson, Gibraltar Museum: "The UK's 30th World Heritage site" <http://worldinfozone.com/features.php?section=Gorham>

The Twickenham connection: [worldinfozone.com/features.php?section=StrawberryHillGifford](http://worldinfozone.com/features.php?section=StrawberryHillGifford)

# Steam, Steel and Shells – 42

By Helen Baker

**PEACE THROUGH VICTORY!** - screamed L'Indépendance Belge and the Belgian newsboys at Richmond Bridge.



12th Nov 1918, L'Indépendance Belge, the Belgian newspaper published in London 1914-18. Belgian National Archives, Brussels.

processions of civilians and soldiers. Army transport lorries drove the towns, packed with soldiers waving flags and calling onlookers.

The Pelabon Munitions Workers downed tools when their siren sounded peace. In large contingents they paraded the streets beside the English, singing the Marseillaise and their own Belgian anthem, the Brabaçon.

Did they return to their benches for the newsboys' cries next day? We don't know; and for many it was holiday again. But the Belgian Village was always bustling; many here to relish the news again.

The Anglo-Belgian togetherness of Armistice Day lasted barely 24 hours. The Government almost immediately banned factories from employing Belgians.



A contingent of Pelabon Munitions Workers taken outside the factory. © Edouard Labeye.

In fact most Belgians couldn't wait: the Town Halls were flooded with applications for repatriation. But shipping was scarce, and priority given to railway workers. Un-moneyed working families of the Belgian Village on the Thames – and the English - had to wait.

© ETCG (Heritage Lottery Funded) and Hollycombe Steam Museum

The day before, first word of the peace reached the Twickenham and Richmond from a booming maroon. Some thought this a last-minute air raid by the old enemy, but to most it sounded jubilation. Offices and factories closed; workers rushed into the streets. In minutes almost every building in the towns were draped with bunting.

A few minutes more, and the melée resolved itself into



A section of "Twickenham's War": mosaic of 1WW Belgians in East Twickenham by St. Stephen's C.E. Junior School, facilitated by Jane Porter and Sue Edkins; displayed in "The Frame", Diamond Jubilee Gardens, Twickenham.

In days, local papers complained about unemployed Belgians in the town, "doing nothing". The repeated question was; "When will they go?"

A journalist asked: "How long are the Pelabon Works people to be allowed to pollute the Thames Valley with foul smoke?"

The "thousands of Belgians make a heavy tax on the housing accommodation and rents of the two towns". And the conclusion? "Nobody wants a big colony of Belgians permanently established here."

So much for English philanthropy and hospitality!

# River Crane Sanctuary



Are you looking forward to the wildflower meadows blooming again along the River Crane Sanctuary by Hospital Bridge Road and the A316? They are not only beautiful but essential for the survival of our dwindling insects: Butterflies, Beetles, Bees are all threatened by our actions on habitats.

We met Nina of Grow Wild in Kew Gardens and were given some seeds to share so do ask us for a packet via our website link.

<https://www.youtube.com/watch?v=CX8VDXd6zCA>

**See How to Make a Heart Shaped Bed!**



The River Crane Sanctuary website <http://e-voice.org.uk/rcs/>

# St Mary's University Update

## Clean Sweep for St Mary's at BUCS Cross Country

Athletes from the Endurance Performance and Coaching Centre (EPACC) at St Mary's University Twickenham won all three individual titles at the British Universities and Colleges Sport (BUCS) Cross Country Championships in Exeter on 2nd February. Alongside this, St Mary's were the only university to win a medal in every team event, making it nine wins out of the last fourteen in the Men's Long Race.

In the Women's Race, Danish Olympian and EPACC Athlete Anna-Emilie Møller completed the 6.2km course in 22:33.0, 11 seconds ahead of second place. She was joined in the top ten by Louise Small, as the St Mary's team won the Bronze medal.

Elsewhere in the Men's Long Race, High Performance Scholar Emile Caires won the Gold medal running the 10.3km in 31:13.5 and contributing to St Mary's team Gold, being joined in the top ten by fellow Scholars Petros Surafel in seventh and Luke Prior in ninth, with Ellis Cross only 14 seconds behind in thirteenth.

The Men's Short Race also saw success for EPACC with Abdulquani

Sharif winning the race in 25:51.7, almost 12 seconds ahead of second place. The team came second, with Callum Charleston finishing in sixth, Christ Law in ninth and Samuel Johnson in tenth.



Speaking of the results, Head of Sport at St Mary's Andrew Reid-Smith said, "The BUCS Cross Country Championships is a hard fought event and this year was no exception. The Championship sees the very best endurance running universities competing against each other, and it was wonderful to see St Mary's athletes continuing their tradition of success."



St Mary's  
University  
Twickenham  
London

RSS Young Actors Company Presents a Double-Bill

# PUNK ROCK

by Simon Stephens

With special permission from Samuel French Ltd

# BASSETT

by James Graham

With special permission from Curtis Brown Ltd

Directed by Katie Abbott

Richmond Shakespeare Society



**Mary Wallace  
Theatre**

The Embankment  
Twickenham  
TW1 3DU

**Thursday 21<sup>st</sup> to  
Sunday 24<sup>th</sup>  
February 2019**

**Box Office**  
**07484 927662**  
*(10.00 to 19.00)*

**[www.richmond  
shakespeare.org.uk](http://www.richmondshakespeare.org.uk)**

***Tickets from £8***

Richmond Shakespeare  
Society is a registered  
charity No. 276271, a  
member of the Little Theatre  
Guild of Great Britain and  
affiliated to artsrichmond



***Don't Come in Tomorrow.***

## Hampton Hill's new Beech House

I was at a meeting the morning I was lunching with a friend at the recently opened Beech House and mentioned where I was heading. “Oh, I think that might actually be the company that makes a success of that building after its rather chequered history” was the general consensus... and I think they might be right!

Oakman Inns has transformed this large site adjacent to Hampton Hill Theatre. The company has sprinkled its magic dust to create a relaxed, all-day venue, that's also dog and child friendly and serves good food and drink. This is the fifth Beech House, so they've had plenty of practice. It's open seven days a week, from 8 till late, and it prides itself on its pizzas (so much so that apparently the head chefs are taken to Italy as part of their 'Oakmanology' training).

We shared starters of **Calamari**: (semolina, yogurt, lemon & chilli marinated calamari, harissa mayonnaise) £7.50 and **Saltimbocca Scotch Egg** (soft-boiled free-range egg, sage, prosciutto, sausage meat, hollandaise) £7.50. The calamari was underwhelming - 'okay, but nothing amazing' - but the Scotch egg was stupendous! So much so, that when I go back I may just have that with a side salad (oh, and perhaps some sweet potato fries!). Next we shared Loch **Duart Salmon & Avocado Salad** (Josper-grilled salmon, garlic & basil marinated tomatoes, baby spinach, red onion, kale & pumpkin seed pesto) £16.50 and a **Halloumi & Portobello Mushroom Burger** £12.00 (Dill pickle, gem lettuce, red onion marmalade, tomato, red pepper & garlic hummus, brioche bun, house fries).



The salad was really delicious, with the generous portion of salmon cooked to perfection (slightly 'pink' in the middle, just how I like it). Vegetarians, vegans and those on a gluten free diet have plenty of options with the menu. The burger was a tasty, interesting combination, but personally, as someone who tries not to eat too much bread, I would prefer to have more mushroom and no brioche bun.



This was washed down with a very acceptable Bloody Mary, and the only disappointment of the meal was my double espresso; a far too bitter blend of coffee for my taste, (and I do like my coffee quite strong). The company prides itself on its sustainability credentials and I was pleased to see paper straws being used. There is a good value menu for children, offering interesting, healthy, options that will appeal to young palates.

Beech House Hampton Hill will, I'm sure, be a great success. It's Oakman Inn's first venture inside the M25 and I doubt it will be the last.

# COMPETITIONS

## WIN YOUR SCHOOL A PRIZE

This year's floral art competition run by Richmond Borough in Bloom, open to all pupils of schools in the borough, promises a prize to the school attended by the winner of each of five age categories, from under five years up to sixth form. In addition to a commemorative certificate to display each school will receive a £50 garden centre voucher.

Each winning pupil, plus two runners-up in each age category, will also win a surprise pack of art materials for themselves. The painting judged best overall will be used to illustrate a special poster for libraries and elsewhere which publicises Richmond in Bloom's summer gardening and floral display competitions for residents and businesses.

The organisers are looking for a painting which is colourful and eye-catching and also shows an observation of natural blooms, with artistic merit. The award winning best 15 will go on public display at events in the borough.

Many schools in the borough adopt the competition as a class project and send in their best entries. But all pupils can also send in their own individual paintings and a special closing date for these, allowing Easter holiday time as an opportunity to work on it, is Monday, April 15.

The competition is sponsored by Achieving for Children. Fuller information and all terms and conditions are on a special leaflet which pupils are advised to request from school or download from

[www.richmondboroughinbloom.co.uk](http://www.richmondboroughinbloom.co.uk)



# Gold medals for Richmond upon Thames College's catering students at Salon Culinaire

On 22 and 23 January 2019, four of Richmond upon Thames College's (RuTC) catering students participated in the annual chef competition Salon Culinaire in Birmingham and won two times gold as well as one bronze medal and one merit. The competition took place alongside The Foodservice Show and The Professional Kitchen Show and was the UK's biggest and most esteemed chef competition of the year. Almost 400 chefs competed in 70 competitions.



This year, RuTC Professional Cookery NVQ Level 1 students were awarded medals for their outstanding efforts. Jake Gibbons received a Merit in the Junior Lamb competition and Arany Yogeswaran won a bronze medal for her Knife Skills, showcasing Julienne and Jardinere cuts on various vegetables.

RuTC Professional Cookery NVQ Diploma Level 2 students Leise Meale and Amy Waite, who are both 17 years old, competed in senior classes against experienced chefs. Leise received a gold medal for her highly skilled techniques in butchering a whole chicken. Whilst competing against established chefs from across the globe, Amy produced two gold medal winning individual starters in 30 minutes for the Avocado Starter competition.

James Unwin, said: "Both students and staff represented the college and demonstrated the continued high standards, skills and commitment we have at RuTC."

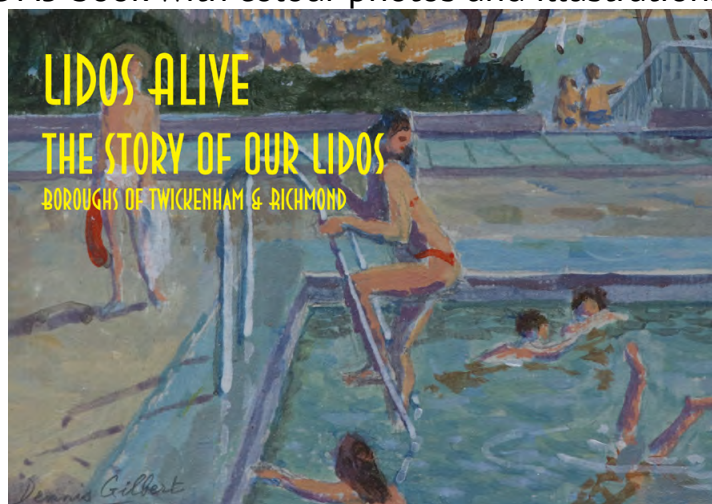


**Richmond upon  
Thames College**

## An Ideal Present for just £6

Lidos Alive – the Story of Our Lidos - is a 63-page A5 book with colour photos and illustrations full of interesting information about the history of outdoor swimming in the Borough and the rise of the lido. Contents include Mereway Bathing Place, pools in Bushy Park, Hampton Pool, Teddington Pool, Hampton Wick, Tagg's Island, Marble Hill, Twickenham Baths, Pools on the Park and other interesting stories.

Books can be purchased at Crusader Travel in Church Street, Twickenham and Premier Wines next to Strawberry Hill Station.





# Muy, muy fantástico – a celebration of Mendoza Malbec

By Michael Gatehouse

*Premier Wine*



*Catena winery*

Argentina Malbec has become one of the great success stories of the wine world. We associate the grape with the country, like New Zealand is identified with Sauvignon Blanc, and Napa Valley with Cabernet Sauvignon. But in fact Malbec wasn't introduced into Argentina until the late 19<sup>th</sup> century, from Southern France, where it was called Cot Noir, and produced rustic red wines, high in alcohol and tannins.



Mendoza Malbecs are a different animal. Velvety, fruit driven, but with body and backbone, these wines represent some of the best the New World can offer. Grown at high altitudes in the Uco Valley and Lujan de Cuyo, good quality Malbec is wonderful to drink now; soft, warm, smooth and elegant but with a power and concentration that can reward keeping for more than 10 years. Mendoza is one of the more intense wine climates in the world. It lies on a high flat plain next to the Andes Mountains, whose peaks act as a rain shadow; annual rainfall is only about 9 inches, characterizing Mendoza as a desert.

Try Catena Malbec (£17.49) for its wonderful aromas of chocolate and leather. Through decades of study and exploration within Mendoza's high altitude mountain terroirs, the Catena family has identified special locations for its Estate vineyards, producing a wine of unique character that has wonderful balance and concentration.

*“Good Argentine Malbec, and there is a great deal of it, for Argentina is one of the world's most prolific wine producers, is deeply coloured, spicily rich with an exuberant juiciness and has as a trademark an almost velvety texture”*

*Jancis Robinson*

Food and wine.com lists Bodegas Septima Malbec 2016 at number three in its list of 25 Argentina Malbecs to Drink Right Now. At £12.49 it's a steal. “This is a sneakily complex bottle, with violets, cherry, and blueberry lifting from the glass, and a palate that is well-defined by mineral, wild berry, and tobacco.”



Mendoza has an ideal terroir for the development of organic and biodynamic viticulture. Dieter Meier makes a blockbuster organic Malbec. At £16.99 it's no toddler but will knock your socks off, or your Gaucho hat if you're wearing one. Meier: *“The vineyard must express itself with no intervention. Imagine the possibilities in Argentina's richest wine regions if we incorporate a viticulture that is pure and free from chemical products.”*

Muy, muy fantástico!

# POPPY TALK IN TEDDINGTON

Sheena Harold

Millions of us wear a red poppy in November as we remember our war dead on Remembrance Sunday each November but do you ever wonder how and where it's made? Well wonder no more for you can find out by coming to the 3rd Annual Teddington Society Lecture to be held at The Lensbury this year on Thursday 28th February. Our speaker will be Deirdre Mills, Chief Executive of the Poppy Factory in Richmond, where nearly 8 million poppies are made every year. In addition they make 139,000 wreaths and some 925,00 wooden Remembrance symbols.



*Deirdre Mills*

Deirdre's illustrated talk will tell us about the history of this remarkable organisation from its beginnings just after the First World War, almost a hundred years ago, through to the present day when it has been given the Freedom of the Borough of Richmond. Originally founded to provide jobs for war veterans in making the famous red Flanders poppies, did you know that the Poppy Factory now has a Getting You Back To Work programme which since 2010 has already helped over 1,000 veterans across the UK to find jobs? You can find out a lot more from Deirdre and see some interesting artifacts that she's bringing along to the Thames View Suite courtesy of The Lensbury, Broom Road, Teddington on Thursday 28th February at 7.30 for 8pm.



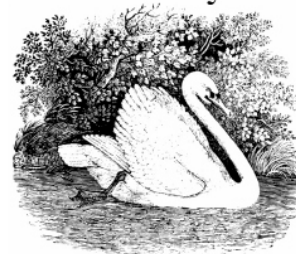
Tickets are just £5, which includes a glass of wine or soft drink, from Sally Howland, Teddington Society Treasurer at 54 Elmfield Avenue, Teddington TW11 8BT.

Email: [sally.howland@btinternet.com](mailto:sally.howland@btinternet.com)

Proceeds from the evening will go to the Poppy Factory.

Photos by Peter Denton

Teddington  
Society

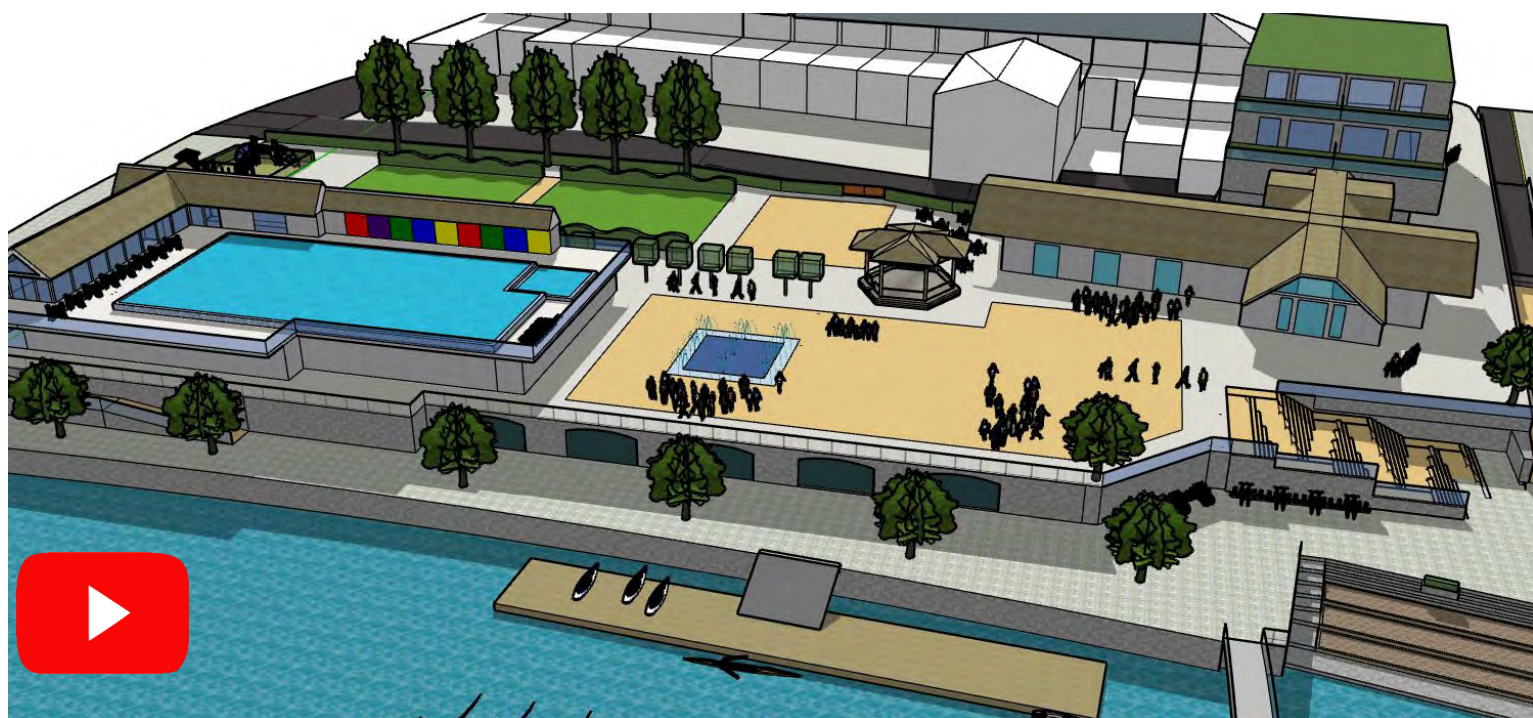


# A CALL TO RETURN SPORT AND LEISURE TO TWICKENHAM RIVERSIDE

*A Christmas and New Year festive ice rink on the new town square*

*Outdoor swimming and health spa with community cafe and restaurant*

*Stand Up Paddleboarding boathouses connect the complex to the River*



*Click image above to view video walkthrough*

The front of the site, on King Street, has a complex for retail/commercial and residential use. An indoor market reminiscent of modern markets in European cities, such as the Mercato in the Termini in Rome or Sant Antoni Market in Barcelona, flows from the King Street units

There are also options for a pontoon and the bridge linking Twickenham with the other side of the river. Underground parking will be included.

## [THE PETITION](#)

[Read a selection of the 4,000+ petition comments HERE -  
See what Twickenham has to say](#)

[History of Twickenham \[outdoor\] Baths closed 1980](#)

[History of the East Twickenham Ice Rink closed 1992](#)



## Rutherford and Son

by Githa Sowerby

Questors Theatre at the Judi Dench Playhouse, Ealing until 16<sup>th</sup> February

Review by Viola Selby

Through Sowerby's unsentimental writing of *Rutherford and Son*, the audience is plunged through time into an industrialised Northern English family living room, made real by designer Bron Blake to appear and feel wonderfully warm and welcoming, with the continued hanging smoke of an industrial town.

Once into the story, having everything happen in this small space heightens the feeling of claustrophobia which each family member feels whilst under their father's rule. And what control the father has! David Sellar is not only master of the house but also master of the stage as he brilliantly manages to depict a man whose sole focus is his business and family name, no matter the cost. Through tense silences, fervent debates, groans and moans made hilarious by the brilliant Despina Sellar as Rutherford's ever-complaining sister Anne, the audience is sent on a rollercoaster of emotional dramas.



Rutherford's main issue, as the title hints, is one of his sons. John and Dick Rutherford want to create futures for themselves, both of which go against their father's views and wishes for them and his company. Kai Hogenacker (John) and William Newsome (Dick) represent their characters' struggles in such a sensitive and realistic way that the audience can truly understand and empathise with the characters.

A less obvious issue arises once a secret affair is brought to Rutherford's attention, the oppression of Rutherford's daughter Janet and John's wife Mary. Both women are subject to the men's commands and constant criticism and, although they seem to peacefully succumb to this subjugation, it is through the explosive acting abilities of Dani Beckett (Janet) and Evelina Plonyte (Mary) that it becomes obvious that these women are not to be messed with ... ..



Read Viola Selby's full review at

[www.markaspen.wordpress.com/2019/02/09/ruther-son](http://www.markaspen.wordpress.com/2019/02/09/ruther-son)

Photography by Robert Vass and Lewis Hine



## Fury

by Phoebe Eclair-Powell

Nicole Charles and Company, Milton Court Theatre, Barbican until 16<sup>th</sup> February

Review by Isobel Rogers

*Fury* is a contemporary tale by Phoebe Eclair-Powell (winner of the Soho Theatre Young Writer's Award) based on Euripides' *Medea*, but director Nicole Charles' production is boldly 2019. Three narrators tell the story of Samantha: a stressed single mum living on a Peckham council estate. She's a powerless figure in a vest top, hair scrunchie and spray-on jeans, inhabiting a city which is increasingly moneyed and unforgiving. She's weighed down by two children and a cleaning job she can barely hold on to.

Lydia Fleming as Sam is arresting, but the character is so archetypal that she's almost blank: she could be any one of countless unlucky women, 'anywhere between 17 and 35'. She meets Tom, a comparatively-privileged Masters student with gelled hair and a preppy polo shirt. His intentions for Sam head increasingly wayward and sadistic. He pays her to do his chores and more. Joseph Potter's eyes sparkle as Tom realises his upper hand in their uneven relationship. She needs him to pay her in cash.



The night they meet, they dance together on the top of designer Charlie Cridlan's silver framed set. Its starkness represents this harsh, unbending city: a place full of skyscrapers. Sam's place in this world is signalled with yellow marigolds pinned onto the frame. But, the structure needs to be larger in scale to avoid play-acting connotations

Our narrators manipulate three heavy grey blocks to create Sam's landscape as it morphs into the seaside and back again. Tom and Sam are intent on adventures away from their city sprawl. They kiss at Nunhead Reservoir. The interplay between them is sorrowfully fascinating: a believable downward spiral of cruel manipulation, acted with skill ... ..

Read Isobel Rogers full review at [www.markaspen.wordpress.com/2019/02/12/fury](http://www.markaspen.wordpress.com/2019/02/12/fury)

Photography courtesy of Guildhall School of Music and Drama



## The Girl on the Train

by Paula Hawkins, adapted by Rachel Wagstaff and Duncan Abel

Simon Friend, Amblin Entertainment at Richmond Theatre until 16<sup>th</sup> February, then tour continues until 23<sup>rd</sup> November

A review by Matthew Grierson

For a thriller, *The Girl on the Train* is rarely thrilling. In fact, it seems to have decided it is a comedy, so successful it is in generating laughs from the Richmond Theatre audience. There is scarcely a situation in the play that does not merit a titter, from awkward post-marital encounters to Rachel's repeated, blatant denial of her alcoholism. Rather than ratcheting up the tension or offering a bleak comment on it, humour remains the predominant mode of a play whose plot nonetheless hinges on a murdered woman.



This makes it all the more difficult to tell a serious, affecting story, and so the production largely does not choose to do so. Instead, it makes a virtue of never resorting to performance and direction when it can mount a stage effect. We can tell Rachel's unfortunate condition because her kitchen is littered with a neat row of empties and artfully arranged bin-bags. So genteel is the squalor that the number of references to Waitrose made me wonder whether the supermarket was actually paying the production to take away carrier bags rather than charging for them.

As a consequence, neither star Samantha Womack as Rachel nor most of the supporting cast are called upon to give convincing performances. We are to believe that regular commuter Rachel has persisted in her daily journey simply to observe a hapless couple as the train stops at a signal. Certainly, the presentation of this is very effective – a combination of projection and live action

– but in order to establish that it has been Rachel's routine she needs to explain as much in the dialogue.

*The Girl on the Train?* I think I'll take the bus.

Read Matthew Grierson's full review at [www.markaspen.wordpress.com/2019/02/13/girltrain](http://www.markaspen.wordpress.com/2019/02/13/girltrain)

Photography by Manuel Harlan





## Resolution 2019 (Triple Bill 18)

*Lighthouse*  
by Hazel Lam

*Ondule*  
by Rouet and Martinez

*time/less*  
by Maria Vivas

Resolution at The Place, Euston, 12<sup>th</sup> February,  
*The Festival of New Choreography* continues until 23<sup>rd</sup> February

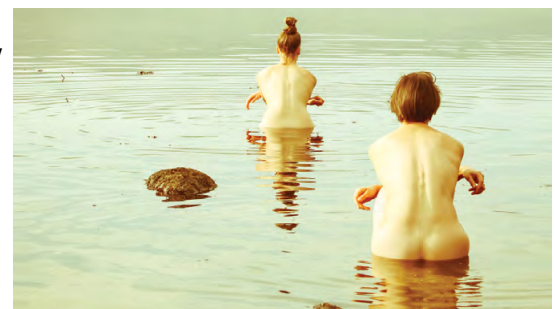
The Place's festival of contemporary dance, continues with an aquatic theme as *Resolution* goes to sea with a triple bill that evokes an eerie marine world and discovers expressionist metaphors for human perception.

*Lighthouse* shows us the way. A light-rope strands us outside a safe emotional harbour. Two protagonists straddle this boundary, one a solo dancer, Hazel Lam, the other a writhing mass of translucent tubing like the tentacles of an unseen cephalopod. Approaching apprehensively, in silence, she becomes enveloped, enthralled, embraced ... but she has crossed the emotional boundary, for as she releases herself to the sensuality of this relationship, the piece becomes a graceful aerial ballet ... ..



The senses are inundated in *Ondule*. Laura Rouzet's expressionist approach combines video and music in a mesmerising dance form, aquatic in its palpating, pounding fluidity. With fellow choreographer, Alejandro Martinez, their synchronised patterns are organic, a single life-form. These organisms, girdled and veiled in articulated pink, are hyperactive decapods, which throb to a heartbeat sound as the cyclorama swirls with hydrodynamic globules ... ..

The mood is much different in Mara Vivas's *time/less*, a contemplative study of the nature of time. We are on Crosby Beach. The superficial rusting on Antony Gormley's statues is replicated in the long shifts worn by the performers, Lynn Dichon and Tara Silverthorn, who stand in silence. Gradually, by almost imperceptible degrees, they engage with each other and drift together ... ..



Read Mark Aspen's full review at [www.markaspen.wordpress.com/2019/02/14/res19-bill-18](http://www.markaspen.wordpress.com/2019/02/14/res19-bill-18)

Photography by Geert Roels, Rouet and Martinez, and Nicole Guarino

# Football Focus

By Alan Winter



## BRENTFORD FC

Won one and lost one this week as Brentford moved up to 15th place in the Championship. Bees are now 11 points off the play off places with a game in hand over many of the teams ahead of them.



## NOTTINGHAM FOREST 2 – BRENTFORD 1 ATTENDANCE 27,829

Brentford were beaten for the first time in almost two months last Saturday as a goal in each half gave Nottingham Forest the points and a 2-1 win at The City Ground. The home side took the lead after a scrappy opening and held on to it despite The Bees dominating long stages of the first half. Forest had chances to seal the game after the interval, and Daniel Bentley saved a penalty, before a goal ten minutes from the end gave them breathing space and meant a late strike from Sergi Canós was not enough to give Brentford anything.

## BRENTFORD 1 - ASTON VILLA 0 ATTENDANCE 9,636

Wednesday night at Griffin Park and Neal Maupay hit his 21st goal of the season in stoppage time as Brentford recorded another win over Aston Villa and Brentford's previous Manager Dean Smith. The Bees are now unbeaten in six against the former European Cup winners and Maupay got the only goal of the game in the dying seconds to make it three wins out of three over Villa at Griffin Park in just over two years. It also enabled Brentford to bounce back after a ten-game unbeaten run was ended by Nottingham Forest on Saturday.

And it was three points that Brentford fully deserved. While Villa had their moments, and created some good chances on the counter-attack, they spent most of the evening on the defensive. Brentford pushed them back as they probed for chances and created enough to win two games. It looked as if the crucial one would not come before Maupay wriggled free to slot home and win the game with only moments remaining. What a finish!

BEES TRAVEL TO SWANSEA ON SUNDAY IN THE FA CUP

Over 1300 Bees supporters will be travelling to Swansea City on Sunday (17th) for the 5th round of the FA CUP. The club has put on over a dozen free coaches for supporters with match tickets. Very simply if Brentford win this one the club will be in the quarter finals of the FA Cup for the first time since 1989 when they travelled to play Liverpool at Anfield and lost 4-0. Liverpool have already been knocked out of this year's competition so that won't happen again. The Swansea match kicks off at 4.00 and is one of the SKY Sports TV live matches. A long day for those of us who will be there but Bees can win this one! You heard it here first!

Come on You Bees!



# HAMPTON & RICHMOND BOROUGH FC

Debutant Marcel Barrington salvages last-minute point for Hampton.

## HAMPTON & RICHMOND BOROUGH 1 – SLOUGH TOWN 1

Not a great performance by Hampton last Saturday but at least they picked up a point with the last kick of the game. Slough defender Sam Togwell opened the scoring after 25 minutes. Tyrell Miller-Rodney conceded a foul in a dangerous position just outside his own box on the left-hand side, and Wells whipped in an inviting free kick for Togwell to nod into the far corner under little pressure.



HRBFC

Hampton reached the half hour mark having created very little in the way of clear-cut chances, with the away team visibly first to every second-ball in the midfield. With five minutes to go until the break, Lench almost put Slough two goals to the good – fizzing a right-footed shot just wide from a central position after Hampton were dispossessed in midfield. The Beavers, despite struggling for large periods of the first half, almost drew level against the run of play just before the half time whistle. The ball broke to Dundas on the left edge of the box, who jinked past his man and fired a deflected effort just wide of the right-hand post with Slough keeper Jack Turner beaten.

Then, as the referee was looking at his watch, Keeper Tom Lovelock saved brilliantly from Slough substitute Sean Fraser and Hampton went the length of the field to score a last-minute equaliser. Ryan Hill whipped in a brilliant cross to the back post, where debutant Marcel Barrington nodded into a gaping net to secure a point for Gary McCann's side. Braintree Town player Barrington signed a loan deal for the rest of the season last week.

Manager Gary McCann's reaction - "I'm not too convinced with the actual performance in terms of ball retention, in terms of quality and in terms of creating. I'm pleased with the defensive structure today, however I can assure you I'm not happy with the level of performance we're giving offensively at the moment. The big plus to come out of today is the battling qualities, we kept going right until the death – it wasn't the most attractive performance but we gained a point off the back of an average performance so it does feel like it was a point gained."

My thanks to Rob Clayden of the HRBFC press team who first posted this match report on the Hampton website.

### Three goal Hampton claim semi-final spot

Following last Saturday's draw with Slough, Hampton and Richmond Borough made six changes on Tuesday night as they put three goals past Hayes and Yeading to reach the semi-final of the Middlesex Charity Cup.

Ricky Wellard scored the first with a curling free kick in the 25th minute. Striker Zak Joseph put his side two up with a finish into an empty net after rounding the keeper with a minute left in the first half. Joseph was involved in Hampton's third too when he played Marcel Barrington in on the edge of the area, his low drive finding the bottom left corner.

Beavers are at home to Gloucester City in the National League (South) today (Feb 16th) Kick Off is 3.00 pm. Why not get down to the Beveree Stadium in Station Road and enjoy an afternoon supporting your local team. The burgers are great!

# Traveller's Tales 17

## Lunch in France

Doug Goodman takes a day trip to France



If you leave Twickenham at 6.00 in the morning you'll have time for a coffee at Dover Port before joining the 09.00 DFDS ferry to Calais. I had priority boarding which means you'll be first off the ship and I used the Premium Lounge with complimentary drinks, snacks and newspapers. The crossing costs £49 each way for a car and up to 9 passengers and priority boarding for your car is £10 each way. Access to the very comfortable lounge is £12 and the ferry company, ([www.DFDS.co.uk](http://www.DFDS.co.uk)), has 30 return crossings daily between Dover and Calais.



Calais lace museum



Go for the Hypermarket's special offer

## VAST CHOICE OF WINE

Just five minutes' drive from the port off the motorway you'll see a sign to the industrial zone where the big wine stores are located. Majestic Wine and Calais Wine have warehouses piled high with wine, spirits and beer along with staff to help you select the best bargains. At Majestic there's a vast choice of bottles at well under £4 and I spotted Comte Alexandre Blanc and Rose at £1.79. I bought Spanish Vina Sol at £3.99 and a Rhone at £2.99. Majestic is best for 'foreign' wine – that is non-French while the Calais Wine Store is better for French wine. I loaded my trolley with two Jacob's Creek sparkling bottles, 24 small bottles of St. Omer beer, a case of Chateau Bourdieu, a case of sparkling Cremant de Limoux and a case of New Zealand Sauvignon Blanc. Total cost was 108 Euros – about £98. A significant saving on UK prices.

## FINE DINING

My favourite restaurant in Calais is Le Grand Bleu situated in the town centre at 8 Rue Jean Pierre Avron. Their menu 'Plaisir' at 23 Euros was superb: nibbles on the table, an 'amuse bouche' of pumpkin mousse, a starter of pastry pudding in onion soup, a main course of beef samosas and veg, a chocolate cake for pudding and petit fours. Truly amazing value! A short walk away in La Place D'Armes is a well-stocked cheese shop with a mouth-watering selection from the Pas de Calais region. Before returning to the port there was time to visit Auchan, the hypermarket to the south of Calais for a large tarte aux Pommes, potted plants, local beer and whatever wine was on 'promotion'. The departure was at 17.00 for the 90 minute crossing to Dover but due to the time difference you arrive at 17.30. A later sailing would have allowed time to visit a fascinating place nearby. The Museum of Lace and Fashion – Cite Internationale de la Dentelle et de la Mode is in a 19th Century original lace factory. It traces the origins of lace making, has beautiful displays of lace and costumes and a floor devoted to noisy, working looms. These machines were smuggled into France from Nottingham I was told.



Cheese to suit all tastes



Wine at well under £4

The 13 hour day trip was well spent with a car full of wine and beer, rather smelly cheese and a chance to relax for three hours at sea. But I wish I had stayed for a night or two to visit my favourite area in Northern France just three hours' drive away – The Champagne-Ardenne Region. But more on that in a later feature.

## ENGLAND WOMEN TO PLAY BARBARIANS IN JUNE IN HISTORIC DOUBLE HEADER WITH MEN'S QUILTER CUP

England Women will play an historic first match against the Barbarians at Twickenham Stadium on Sunday 2 June. The game will take place on a rugby-packed day at the home of England Rugby, with an England men's XV also playing the Barbarians in the Quilter Cup, alongside the Gill Burns and Bill Beaumont Division 1 Finals.

It will be the first time the Red Roses have played before the men, with the game kicking off at 12.45pm. The women's Barbarians launched in October 2017 and made winning debuts against both Munster and the Army in the 2017/18 season. The game will act as preparation ahead of the Red Roses summer tour in July.

England Women head coach Simon Middleton said: "Connecting both the men's and women's Barbarians fixtures at Twickenham Stadium is a great concept and will truly bring to life the women's Barbarians. "It provides us with an excellent opportunity to help us prepare for this year's summer tour later that month."

Barbarian FC Chairman John Spencer added: "The Barbarians successfully launched its women's team in 2017 to bring together talented individuals and create a team that plays with a unique spirit of adventure and enjoyment. For them to face an international side is a great opportunity for the club to have two teams taking on England at Twickenham and means we can showcase all that is good about the game."

The Quilter Cup, kicking off at 3.30pm, sees an England XV meet the Barbarians for the 18th time in what will be another hotly-contested fixture. Jim Mallinder will assume the role of head coach for this match, with Eddie Jones overseeing the squad. The Quilter Cup will offer some players a final chance to make a case for selection for Japan. Fans can also expect to see some bright new prospects for the English game who would look to be pushing for inclusion over the next four years on the road to 2023. Mallinder will be supported by a coaching team to be confirmed, which will be agreed as part of the coach development programme between England Rugby and Premiership Rugby.

Speaking about the fixture Mallinder said: "I'm really excited to be head coach of this England team. "It's an important fixture because any time you put the England shirt on you are representing your country and that is a huge honour. Eddie will have his eyes on a certain group, but this will be an opportunity for some players who are just outside of selection to show how talented they are. "The unpredictability of the Barbarians makes it such an exciting fixture for supporters. As we have seen over the past few years they always bring a strong star-studded side and have an adventurous style of playing so we are going to have to be at our very best and are looking forward to the challenge.

Eddie Jones added: "Our matches against the Barbarians have always been exciting fixtures to be involved with and a good way to finish the season on a high in front of a Twickenham crowd. This match will see some exciting talent be given the opportunity to play against a Barbarians side who will no doubt be full of top-quality internationals. I look forward to working with Jim Mallinder in helping prepare the side for this match."

Tickets are on sale NOW with prices from £20 for adults and £10 for children. Visit [www.englandrugby.com/tickets](http://www.englandrugby.com/tickets) to buy.



# RED ROSES SECURE BONUS-POINT WIN OVER FRANCE

England Women made it two bonus-point wins from two in the 2019 Women's Six Nations as they beat France 41-26 at Castle Park in Doncaster.

In front of 4,674 fans in south Yorkshire, England took the lead against the reigning Grand Slam champions after Katy Daley-Mclean's cross-field kick was superbly taken in the air by Jess Breach to dot down.

After Sarah McKenna was held up over the line, a break down the wing from Kelly Smith was quickly recycled for Poppy Cleall to hit a short line and power over.

Despite prop Vickii Cornborough being shown a yellow card, England scored again with a player less when Emily Scarratt's clever grubber bounced up perfectly for the onrushing Smith to gather and sprint clear.

England were not done before half-time, when McKenna's superb line break set up Breach for her second as she dived over in the corner as the bonus-point was secured before the break.

France responded in the opening stages of the second half when Safi N'Diaye got their first points, but some strong forward work close to the line saw England respond and Cleall crossed for her second.

An excellent break from France scrum half Pauline Bourdon gave the visitors hope, before Red Rose replacement Hannah Botterman finished a series of pick and drives and then Catherine O'Donnell went over in the corner for England's seventh. But Romane Menager crossed in the final play of the game to secure a losing bonus-point.

The Red Roses all-time top points scorer Katy Daley-Mclean passed 500 international point in Doncaster when she converted Breach's early score, from which she provided the assist with the kick.

Only Jonny Wilkinson and Owen Farrell are ahead of the fly half in England's all-time point scorers, with team mate Emily Scarratt behind her on 434 points.

The Loughborough Lightning fly-half put in an excellent kicking performance out of hand throughout, and is now up to 505 points after her six points during the game.

Middleton said: "That was a massive win for us and I was really pleased with how we came out and attacked and kept our discipline. We let France in during the second half but that only shows what a world-class side they are.

"We are not the finished article yet and there is plenty still for us to work on. Tonight we will let ourselves celebrate a great win but there is no place for complacency."

The Red Roses next travel to Cardiff to take on Wales Women at Cardiff Arms Park on Sunday 24 February, KO 12.30pm.



# Richmond Film Society's 57th Season of World Cinema continues at The Exchange, Twickenham

19 February 8PM

## After The Storm (Japan)

Directed by Hirokazu Koreeda

**Ryota is an unsuccessful writer who struggles to reconnect with his young son after his divorce. Koreeda shows the warmth, subtlety and humour of family relationships in his typically unshowy but engaging style.**

Films are screened at 8:00pm at The Exchange, 75 London Road, Twickenham, TW1 1BE. Members go free. Non-member tickets are £5 (full-time students £3). Tickets can be purchased on the night (cash only) or in advance from The Exchange's Box Office – in person, by telephone on 020 8240 2399 or online

Facilities include a very comfortable, tiered 285-seat theatre, lifts, disabled access, a bar and a café. Films are shown at 8.00pm sharp, with no trailers and no ads. On screening nights, the Bar is open from 7.00pm and the auditorium opens at 7.30pm.



Half Page

Quarter Page Landscape

Quarter Page Portrait

Eighth Page Landscape

Eighth Page

*Why Advertise with  
the Tribune?*

Example advert sizes shown above

Thousands read The Twickenham Tribune

If you are reading this you could be advertising your business with  
The Twickenham Tribune. Community rates are available

Contact: [advertise@twickenhamtribune.com](mailto:advertise@twickenhamtribune.com)

View ad details at [www.twickenhamtribune.com/advertise](http://www.twickenhamtribune.com/advertise)

©Twickenham Alive Limited. All rights reserved. No part of this publication may be used or reproduced without the permission of Twickenham Alive Limited. While we take reasonable efforts, this online newspaper cannot be held responsible for the accuracy or reliability of information. The views and opinions in these pages do not necessarily represent those of Twickenham Alive Limited or The Twickenham Tribune. [Terms & Conditions](#)